



*Objective 2 2000-2006*  
*REGIONE EMILIA ROMAGNA*

**THE POINT OF VIEW OF  
PROVINCIA DI MODENA**

# Priorities I and III: Role of the Provinces

## **Priority I – Support to enterprises**

*Support private investments, in sectors and areas defined by the SPD*

**Role of the Province:** Management of some measures dedicated to local enterprises

## **Priority II – Concertated intervention for local development**

*support to local public administration's intervention*

# Objective 2 Areas

## Phasing Out – Plain area:

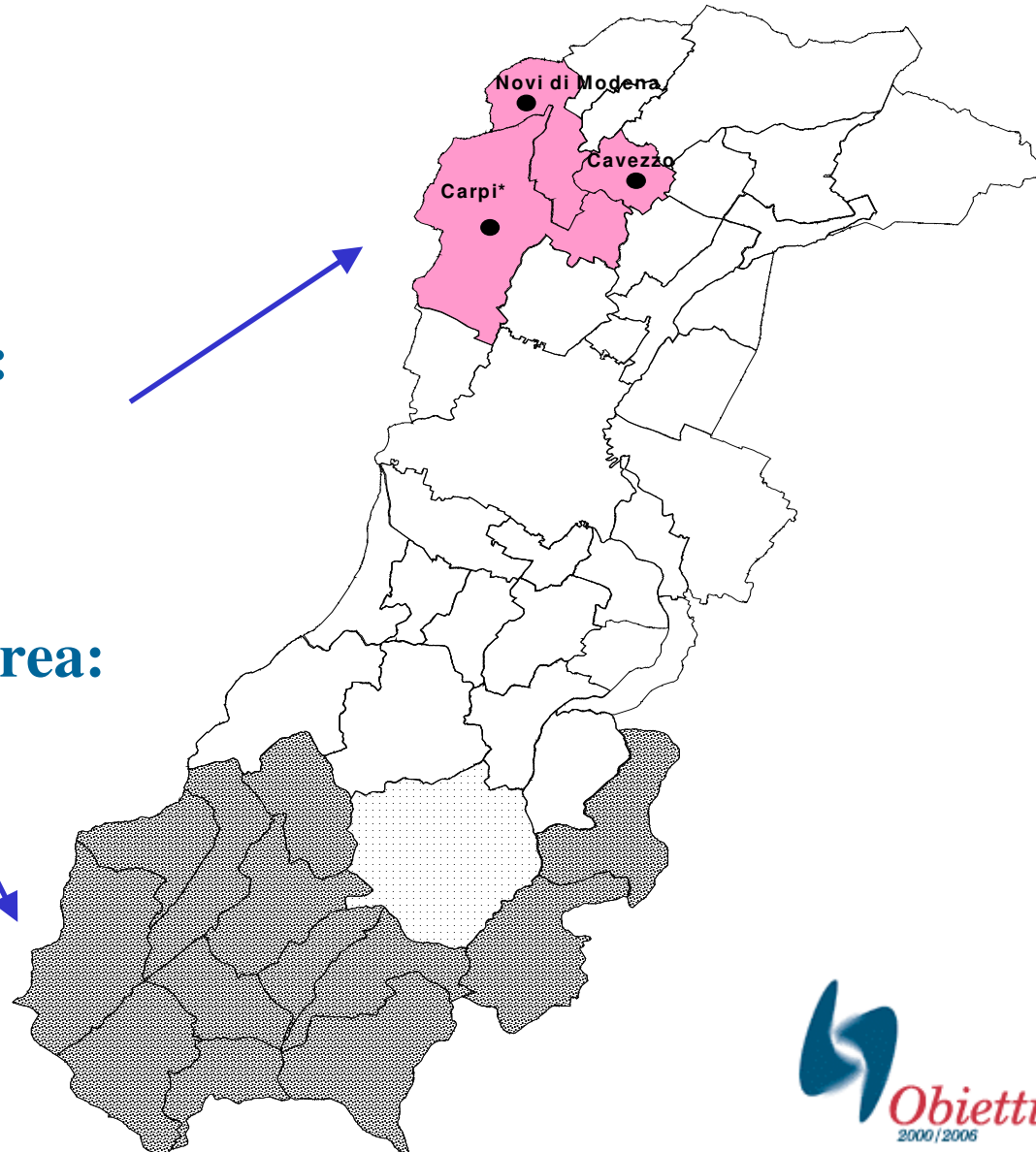
Population 111.030

Enterprises 3.100

## Objective 2 – Mountain area:

Population 37.560

Enterprises 3.200



# Resources in the Province of Modena

## Priority I

	Resources	Nr Projects Received/ Financed	Calls per M.
Plains Phasing Out Mountain Ob. 2	805.000	561/188	4
	6.113.000		

---

## Priority II

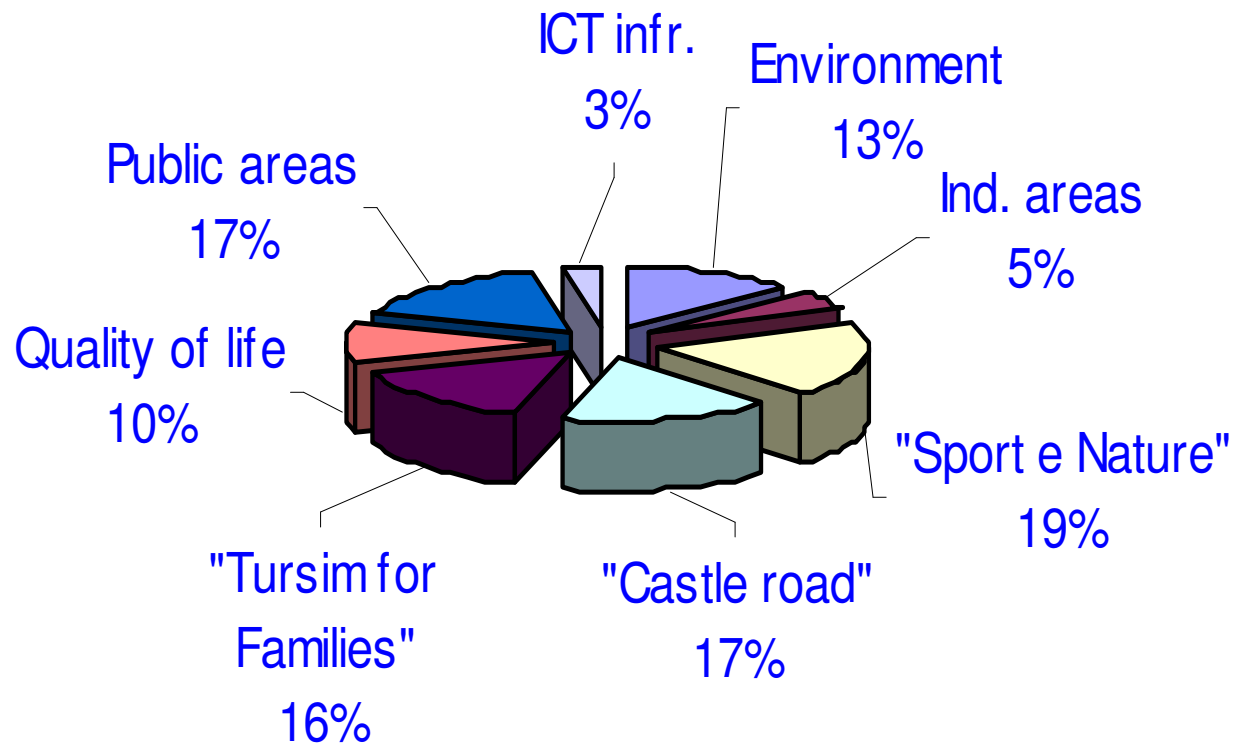
	Resources	Nr Projects
Plains Phasing Out Mountain Ob. 2	2.600.000	17
	10.990.000	128

---

## Priority III

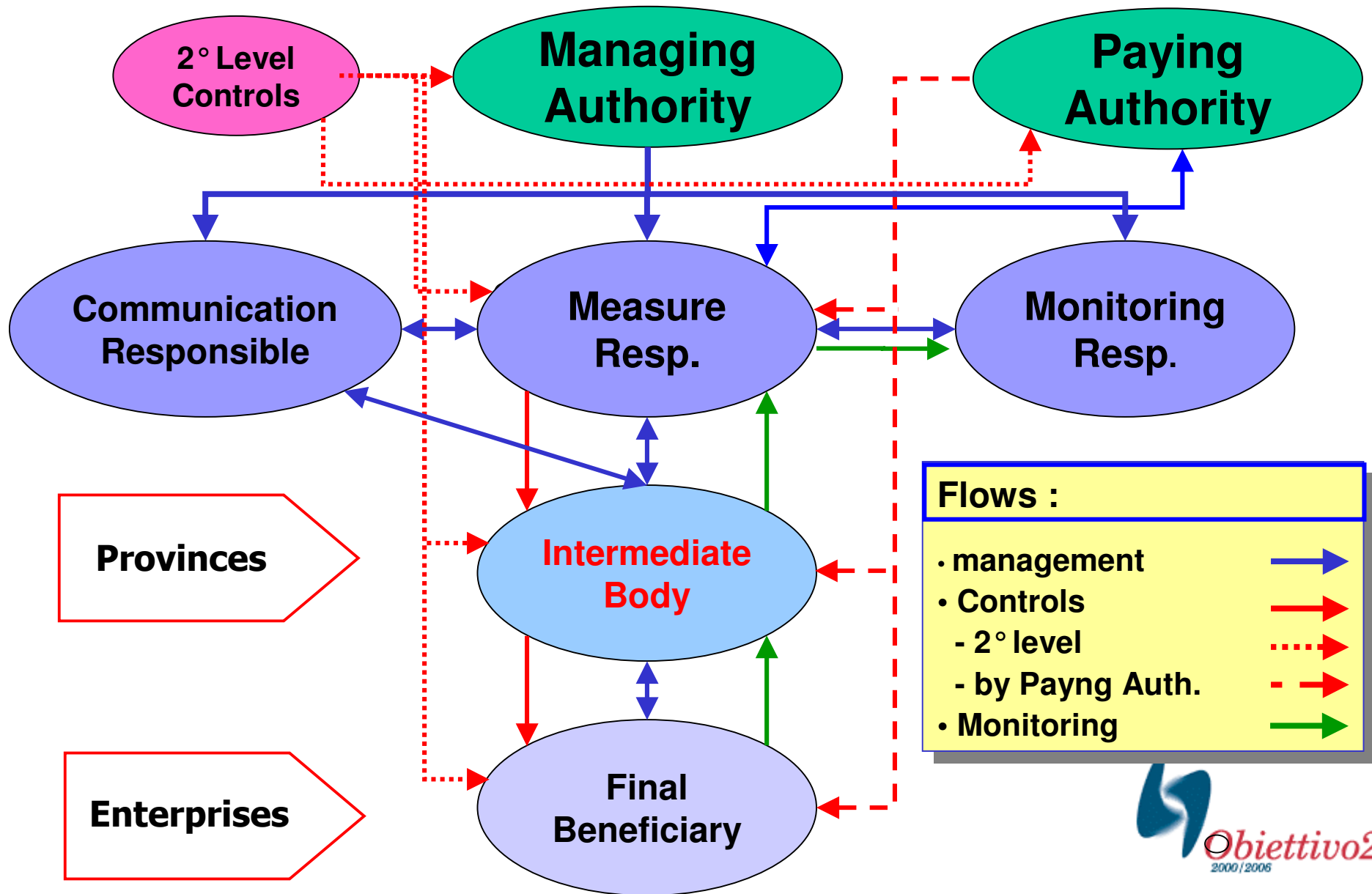
501.000 (2000-06)

# AXE II – Projects by tipology Mountain



*% on total value of projects*

# Organisation



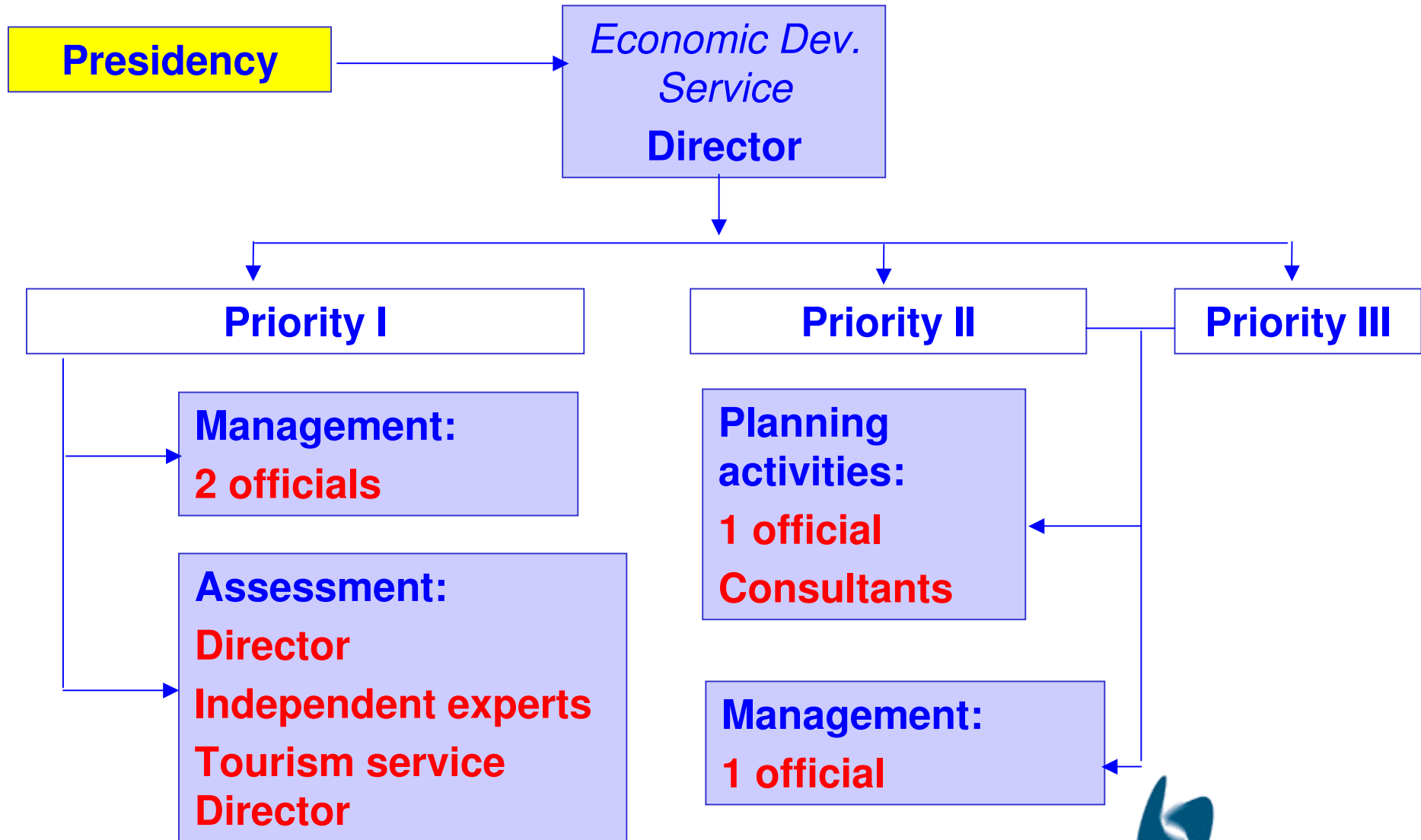
# Advantages of Provinces' involvement

- **Programme definition and implementation closer to local level/final beneficiaries**
- **Increased involvement of local actors**
- **Synergies with local programmes and increased impact of the SPD programme**
- **Technical assistance more effective**
- **“Practice” likely to be re-used in other programmes definition**

# Synergies with other actions of the Province of Modena

- **Objective 3 (ESF)**
- **Leader +**
- **Environment protection actions**
- **“Intraprendere”**
- **Telematic development plan**
- **Sectorial plans:**
  - ✓ **Commerce (retailing)**
  - ✓ **Turism**
  - ✓ **Handicraft**

# resources



**Total Staff: 1 Director (50%); 4 officials; 1 consultant + others**