

Regions and Sub-regions working together - a dialogue in Finland

Mr. Jukka Järvinen
City of Tampere, Business and Development Center

Sub-Regional Network Conference
Bristol 26th – 27th June 2007

The City of Tampere



Founded 1779

205 000 inhabitants

3rd largest city in Finland

From traditional branches of industry

- e.g. textile -, paper - and engineering workshop industry

To a center of high tech and know how

- e.g. biotechnology, ICT and mechanical engineering

No. 1 in the city image surveys in 2003-2004

Challenges: High unemployment rate (13%) yet simultaneously a shortage of educated work force, social disintegration, resources of social services (aging of population), increasing competition In the field of innovations

Tampere



City of Tampere

- Structural fund delivery

- Delivery of structural Fund projects
 - Coordination by Business and Development Center
- management of municipal match funding
 - App. 25 % of project budget
- Fits the S F programme goals into city strategies

City of Tampere

- Structural fund delivery

- 2000-2006
 - Structural funds form Objective 2 and 3
 - Objective 2: Hervanta suburb (territorial)
 - Hervanta EU Programme established by city organization
 - Project delivery, coordination and support
 - Objective 3 (thematic)
 - Whole city eligible for Objective 3 (ESF)
 - Broader employment goals and strategies; cooperation with Tampere sub-region and Tampere Region.

City of Tampere

- Structural fund delivery in Hervanta 2000-2006

- Largest suburban district of Tampere
- 21 000 inhabitants (+ 4000 students)
- Dual profile:
 - Centre of high technology and know how
 - Densely built residential area with social problems
- Over 100 high-tech businesses, Tampere University of Technology, Tampere technical college, VTT Technical Research Centre of Finland, Hermia Science Park, Hervanta Upper Secondary General School, mathematics and IT line, Nokia Phones planning departments, Police Academy

City of Tampere

- Structural fund delivery in Hervanta 2000-2006

- Encourage innovative business with the target of 385 new companies and 1000 jobs
- Develop the community into a laboratory of information society
- Support monitoring and assessment tools of the problem area
- Increase the attraction of the community by improving the physical environment and social networks

City of Tampere - Structural fund delivery

- 2007-2013
 - Permanent EU Office for consultancy, support and coordination (thematically balanced project group)
 - the Business and Development Center of the city organization
 - Whole city eligible for Structural Funds
 - Western Finland Competitiveness and Employment Objective Programme
 - Programme's Urban dimension for Tampere sub-region (city and 6 surrounding municipalities): thematic priority 4
 - Special themes on Programme level (Western Finland)

Subdivision of Finland

1. NUTS I → Main Finland
2. NUTS II → East Finland, West Finland, South Finland, North Finland
 - Structural fund programme level
3. NUTS III → 20 regions (Tampere Region)
 - Management of structural funds
4. 77 municipal sub-regions (Tampere City Region)
5. 430 municipalities (Tampere)
6. Municipal divisions like suburban districts
 - Objective 2 urban areas of SRN partners Turku and Tampere

A dialogue between regions and sub-regions

1. Participation of the municipalities through the formal arrangements on regional level
2. special arrangements for partnerships and informal networking
3. Programme development and planning for the programming period of 2007-2013.

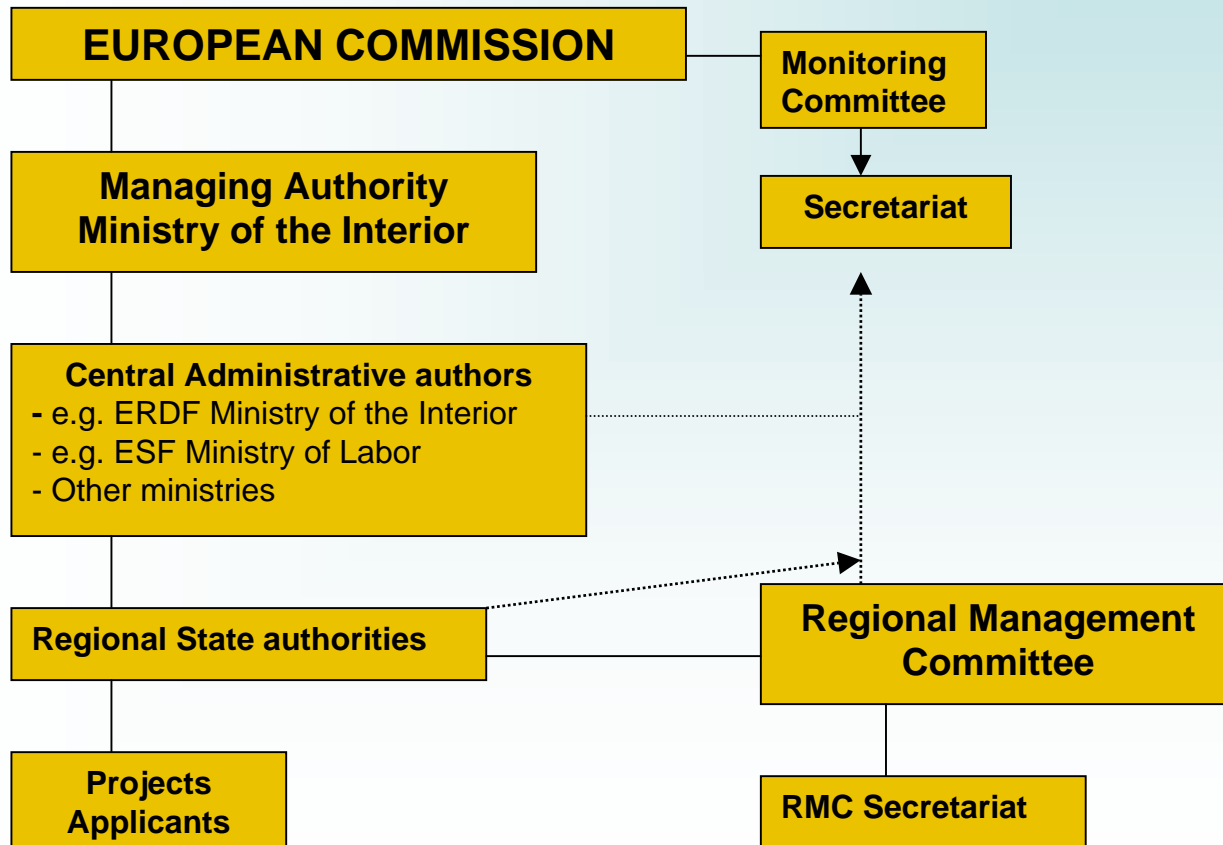
Background

1. Governmental regional policy from 1960's → State regional offices
2. 1990's new law on regional development → responsibility of regional development to the state and municipalities
3. Regional development tasks to regional Councils

Participation through the formal arrangements

- The responsibility for the governance of Structural fund programmes in Finland is divided between Ministry of Internal Affairs (ERDF) and Ministry of Labour (ESF)
- The overall coordination of structural fund projects, project decision process, payments and monitoring takes place at regional level by **Regional Councils and regional state authorities**:
 - State provincial offices
 - Employment and economic development centres (TE Centres)
 - Regional environment centres
 - Road district

Administration of Obj. 2 (territorial programmes) in Finland



Participation through the formal arrangements

- Regional councils

Sub-regions/ municipalities can participate in SF policies through their (mandatory) membership in Regional councils

- Statutory joint municipal authority for regional planning and development
- Planning of a regional scheme, a regional plan and a regional development programme (includes the main strategic emphases of regional structural fund policies)
- Board of the Regional Council elects the Regional Management Committee

Participation through the formal arrangements

- Regional Management Committee

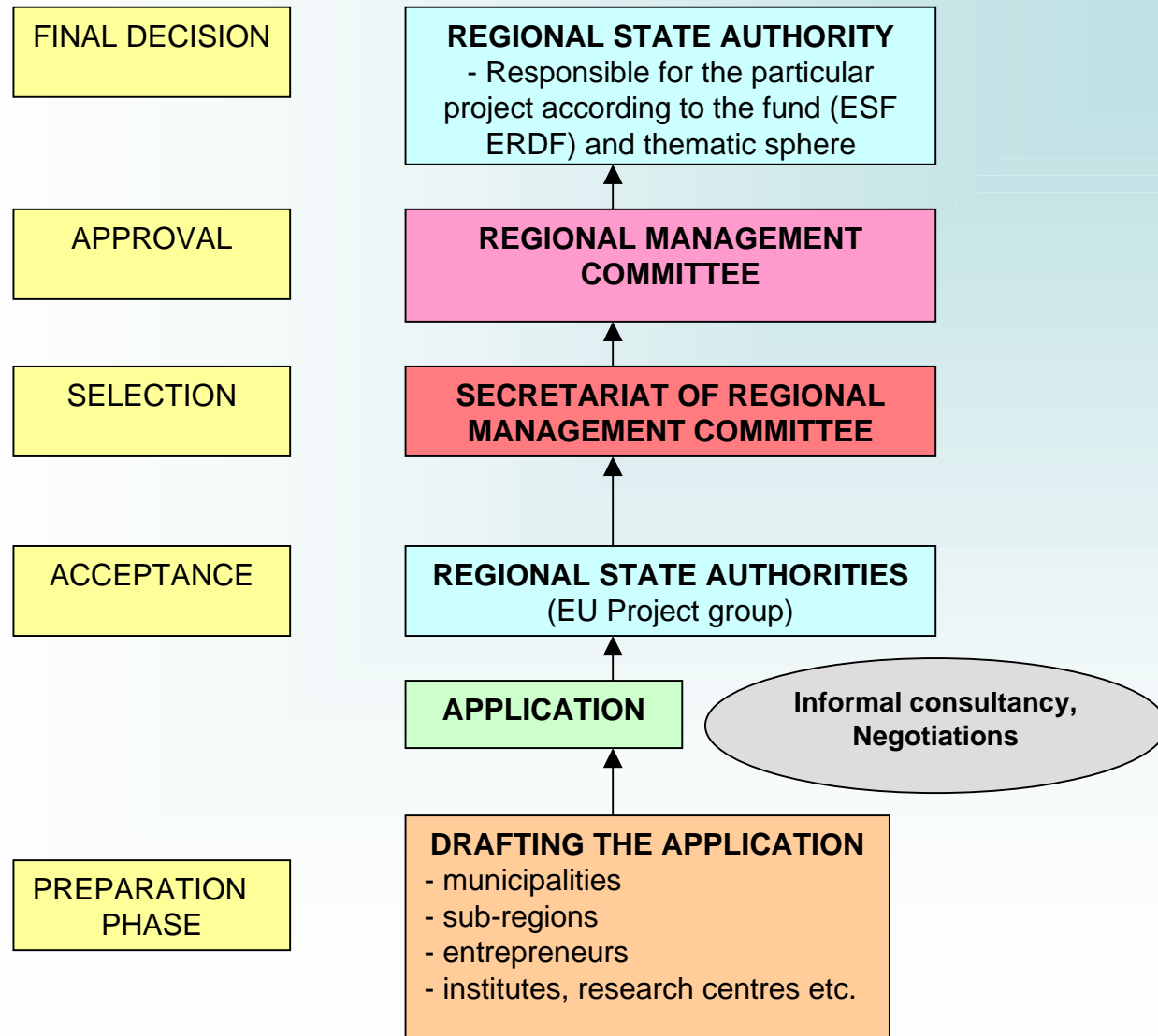
Sub-regions/ municipalities can participate through their membership in Regional Management Committee or RMC Secretariat

- Three equally represented bodies (8+8+8): 1) Regional councils and their municipalities 2) (regional) state authorities and 3) social and economic partners (main labour organisations/NGOs)
- According to structural fund legislation, RMC
 - Allocates S F funds for regional state authorities
 - Fits the S F objectives into a wider regional development strategies
 - Approves the big regional and trans-regional projects (0,5 M€)
 - Decides the selection criteria for SF projects i.e. regional emphases of the programme implementation
 - Follows up the implementation on regional level

Secretariat of the Regional Management Committee

- Support for the Regional Management Committee
- Pre-selection of projects
- Prevention of overlapping of projects and duplication of funding
- Tampere Region 2000-2006 → only regional state authorities
- Tampere region 2007-2013 → Representation of Tampere city

Application process



Formal arrangements in Finland- remarks

- Finnish Regional management Committee procedure realizes the partnership principle required by the EU regulations on Structural Funds
 - However, the EU requirement wasn't the only reason creating the RMC; there was a need to develop co-ordination between the key actors in regional development
- New partnership arrangements have contributed to the more positive results of SF programmes
 - Clear roles and responsibilities
 - The quality of guidance for projects has improved after the cooperation of different authorities
 - Commitment
- Representation of municipalities in Regional Councils and RMCs promotes the thematic integration between development strategies on municipal, sub-regional and regional levels
 - Guarantees the participation of municipalities especially in strategic, programme level of work
 - Gives a voice to local perspectives and knowledge

Formal arrangements in Finland- remarks

- Municipal representatives in the formal administrative processes are not necessarily closely in touch with the S F delivery processes
 - There has been debate about the selection process of municipal representatives (experts vs. politicians)
 - Information does not necessarily reach those who aren't directly involved in formal processes → the role of the intermediary organizations one solution in urban areas
- Arrangements based on law form a base for the dialogue between regions and sub-regions → other practices often needed to complete the partnership

Practices for partnership in urban areas of Finland

The dialogue between cities and regional authorities has been developed and fostered through cities' participation in the delivery of the projects as well as in the management of the municipal match funding of the projects (SRN partners Tampere and Turku)

Practices for partnership in urban areas of Finland - intermediary units

- Main urban centers in Finland set up coordination units / intermediary organizations for project delivery in the areas eligible for ERDF (2000-2006) -> expanding role of cities?
- Tampere: Hervanta EU Office (Hervanta suburb)
- Supporting, assisting and counselling existing projects
- developing new projects
- a bridge between regional authorities, projects and other stakeholders
 - Hervanta EU Office participated in the work of the RMC (consultative role; no authority to vote)

Practices for partnership in urban areas of Finland - intermediary units

- Tampere's experiences about EU office's (Hervanta EU Programme) intermediary role
 - Contributed to the success of reaching the main goals of the programme
 - Managed to bring EU affairs and EU projects closer to the city organization's core → compatibility of the programme with city strategies
 - Created a wide cooperation networks
 - Provided continuity in the project world → became a storage of cumulative knowledge and experiences
 - Mediated the knowledge of local stakeholders and urban aspects to the regional level
 - → contributed to the high quality of projects

Practices for partnership in urban areas of Finland - intermediary units

- Tampere's experiences about EU office's (Hervanta EU Programme) intermediary role
 - Expectations vary according to different stakeholders (projects, regional authorities,..)
 - the own budget and the absence of the strict project goal setting (no EU funds) gave flexibility to the every day work and made it possible to react quickly to arising needs.
 - final evaluation of the EU Programme: Intermediary organization could be seen as a "bunch of good working practices" e.g.
 - new project idea brain storms
 - filter for the "information flood"
 - managing conflicts
 - provided education and courses for projects
 - weekly meetings with projects
 - participation in RMCs meetings
 - preparation work for the next period,...

Practices for partnership in urban areas of Finland - SRN finding

Tampere: Meetings with regional funding authorities

- Hervanta EU programme's office invited regional state authorities for a discussion once or twice a year
- The aim was to report about the results on local level and discuss informally about the development challenges and possible solutions
 - The annual reporting on results among regional authorities is made on regional level (The annual reports of the Regional Management Committee). Hervanta as an urban suburb differed in its profile and activity from the other Objective 2 sub-regions. Local reporting with its own indicators gave a better perspective on future needs.
 - Regional authorities didn't have budgeted resources to report about the results on sub-regional level

Practices for partnership in urban areas of Finland - general remarks

- Most of the informal practices deal with information delivery, reporting mechanisms and networking
 - In Finland networks and institutional capacity strong
 - Also in Turku The project net of South West Finland (database)
- Practices that directly support formal project application and approval process are more problematic
 - Tampere didn't have an official status in the project selection procedure (EU Project group) despite the management of municipal match funding (also an applicant)
- Intermediary units as “social innovations” assured effective implementation of projects and effective utilization of available funding
 - Without Hervanta EU Programme the visibility of Objective 2 in Hervanta would have been very low
 - City's Participation to the delivery balanced the project group
 - priority line 3 “Developing the area structure and living environment”

Programme development and planning for 2007-2013

- Preparation of the National Strategic Reference Framework NSRF
 - Draft in the internet; possible for everyone to comment
 - The city of Tampere gave an official statement
 - a NSRF Working group for drafting and finalizing the framework strategy: Wide scale of representatives

Programme development and planning for 2007-2013

- Preparation of the regional Structural Fund Programmes
 - The Regional councils were obliged to cooperate with the cities when drafting the substance for the urban dimension of the operational programme
 - Ministry → Western Finland Alliance → Regional councils → Tampere city

Thank You for your attention.