

Complementary use of Structural and National Funds – Maximising Impact

The Bristol Experience

Paul Owens



Bristol - Characteristics

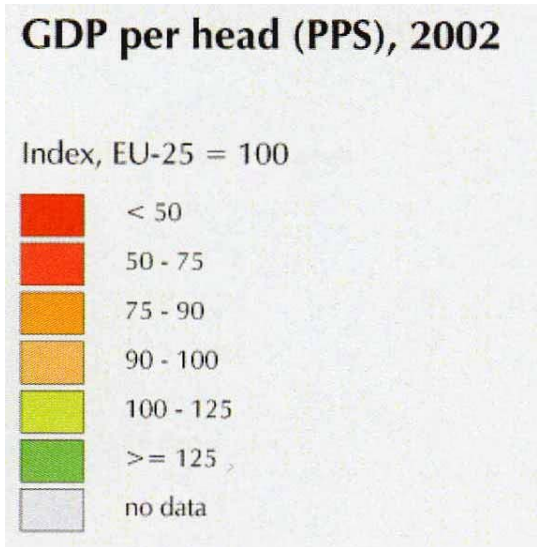
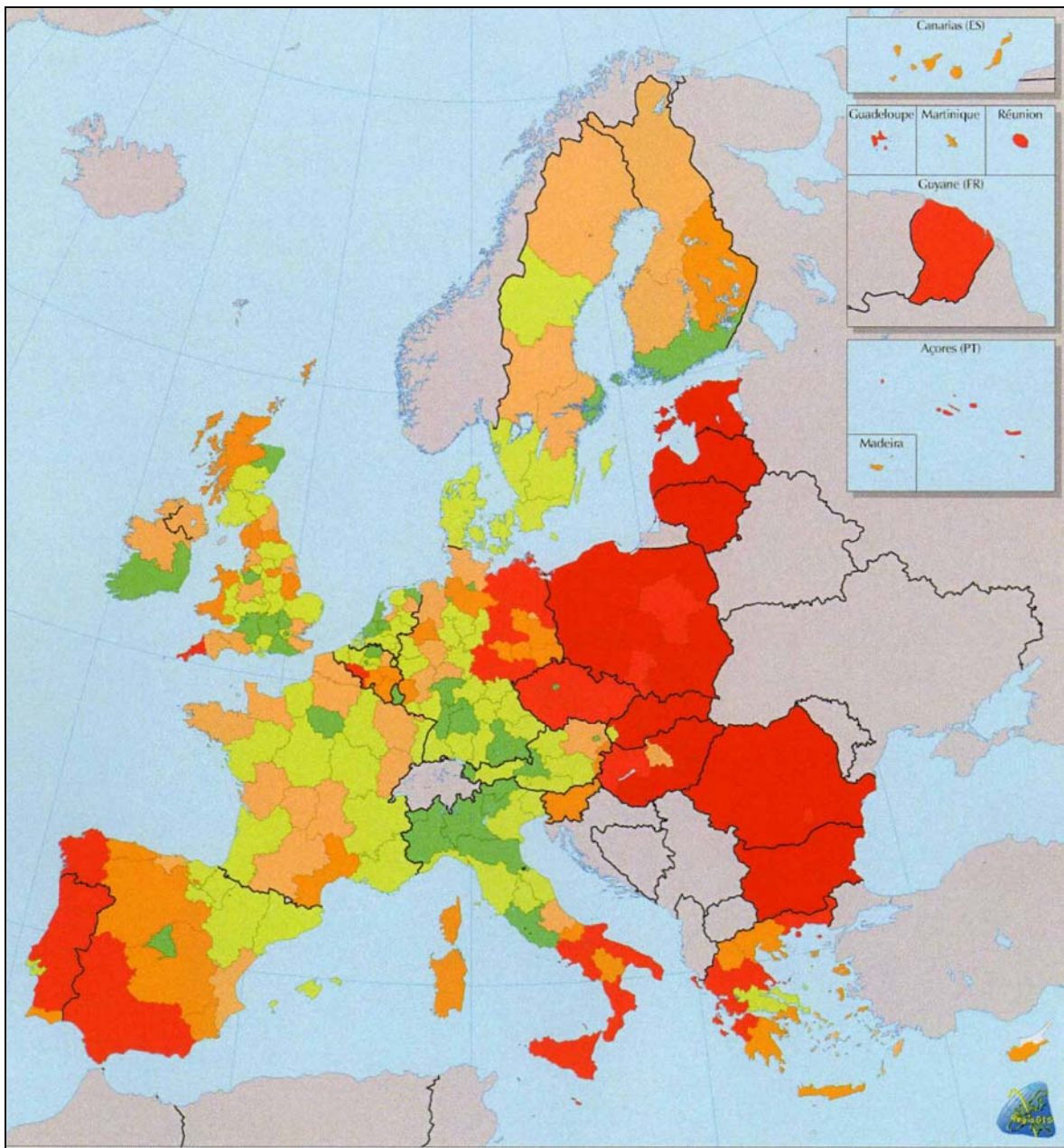
- Population 382,000, 110 km²
- 2nd strongest economy in England outside of London (GDP per head)
- Shortlisted for the 2008 European Capital of Culture
- 36,000 students at two universities
- 82.4% of persons of working age economically active

Bristol – Key Sectors

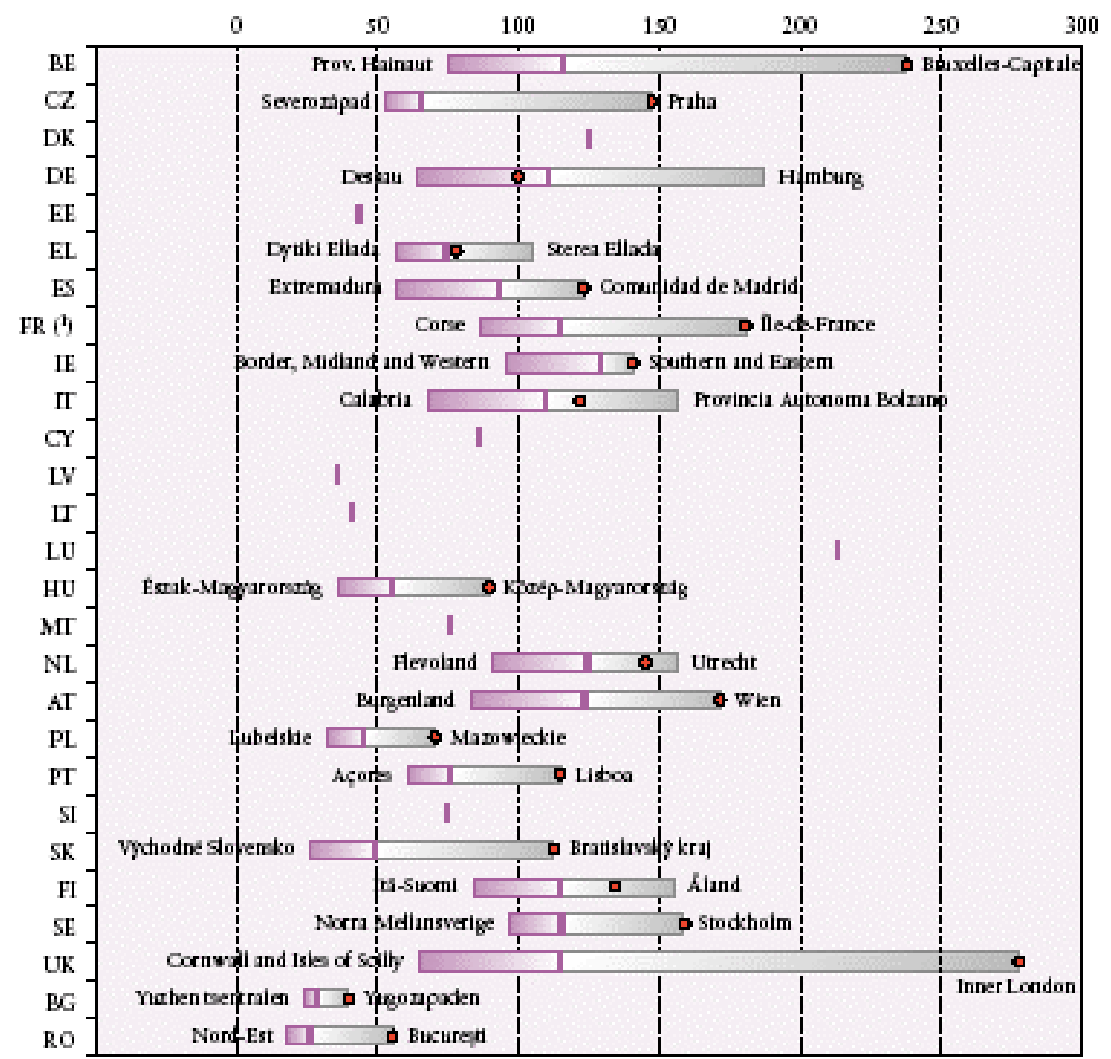
- Aerospace (Airbus, Rolls Royce, etc.)
- Environmental Technologies (wind power to waste disposal)
- Media
- Financial Services
- ICT
- Printing & Packaging
- Tourism

Bristol – Successful?

- Bristol is a successful and vibrant city
- Knowledge based economy
- With significant economic problems



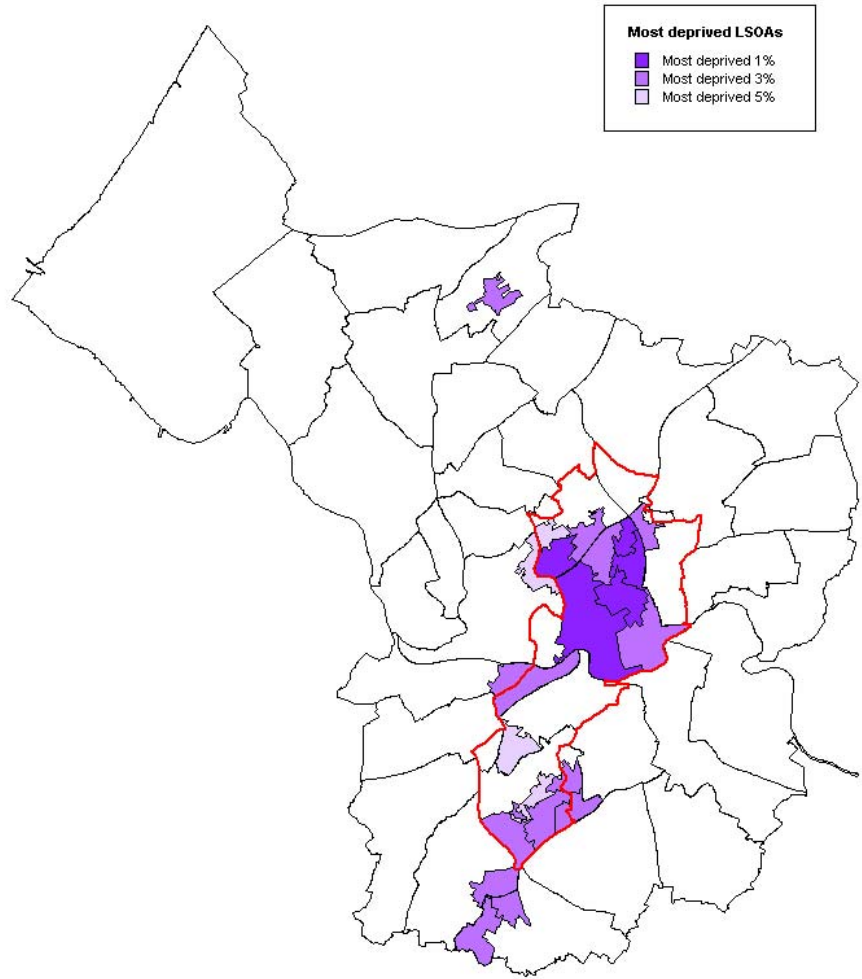
Graph 3.1 — GDP per capita (in PPS) 2001, NUTS 2 level, in % of EU-25 average (EU-25 = 100)

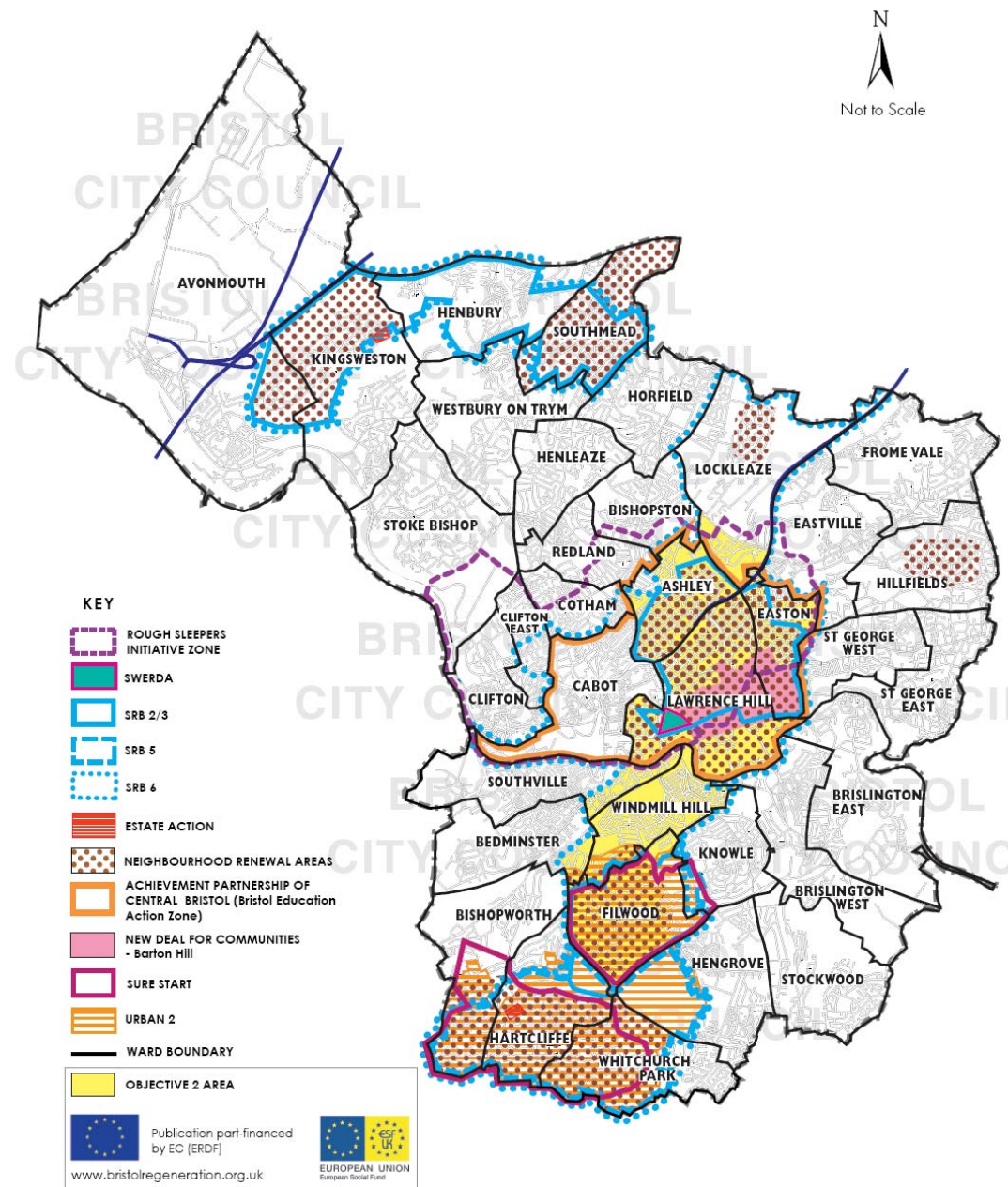


(*) Without overseas departments.
 ■ Average of all regions in the country.
 ● Region containing the capital city.

Index of Multiple Deprivation 2004 and Objective2 Area

Source: ODPM, Indices of Deprivation 2004
Analysed by Strategic and Citywide Policy, PTSD





Bristol Partnership & Regeneration (Delivery) Group

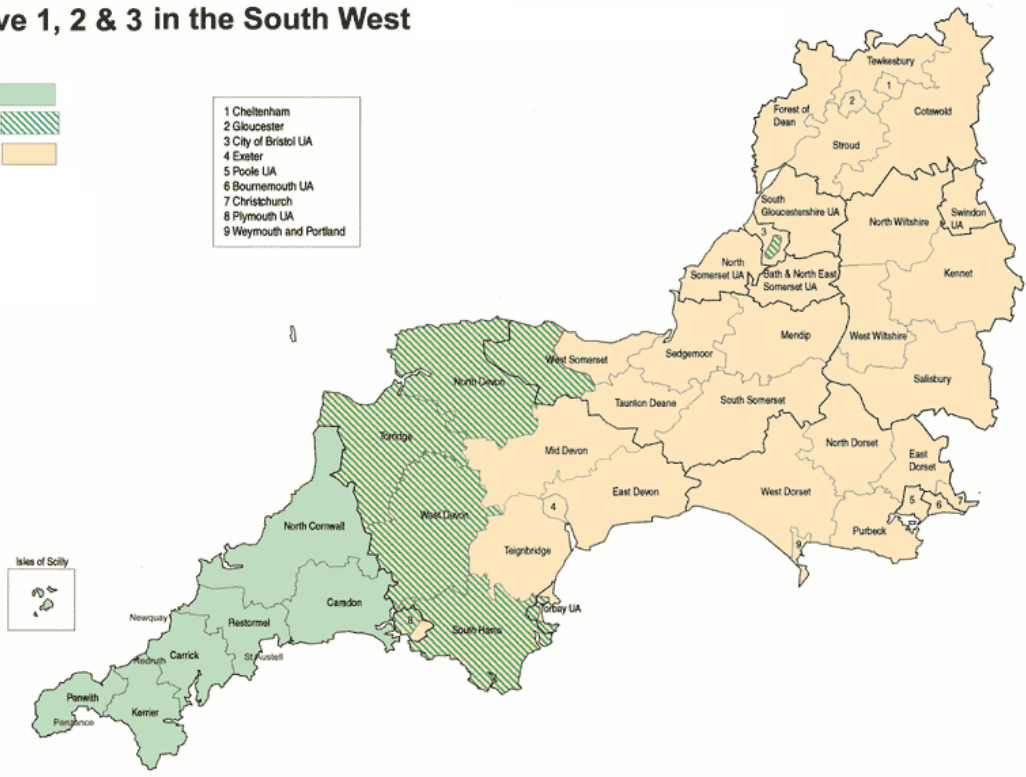
- Joined-up strategy for Bristol
 - Co-ordinated delivery of regeneration funding streams

Objective 1, 2 & 3 in the South West

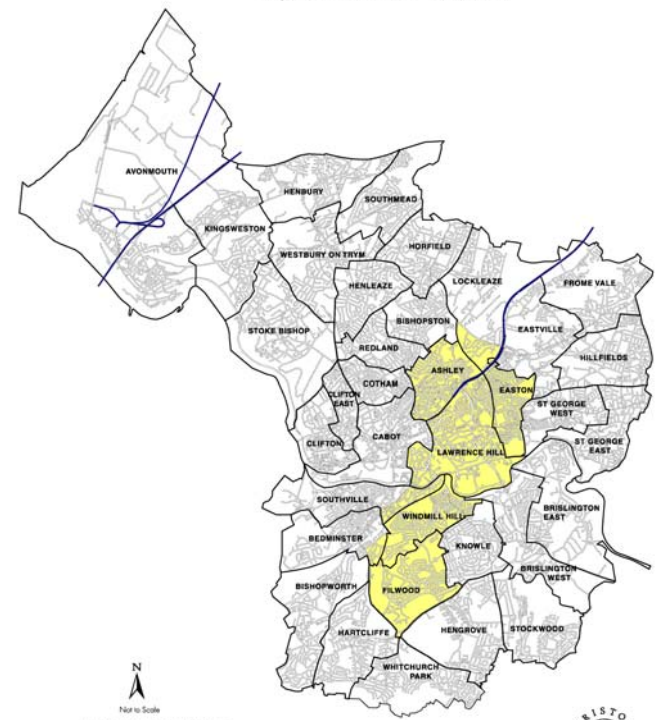
Key:

- Objective 1
- Objective 2
- Objective 3

- 1 Cheltenham
- 2 Gloucester
- 3 City of Bristol UA
- 4 Exeter
- 5 Poole UA
- 6 Bournemouth UA
- 7 Christchurch
- 8 Plymouth UA
- 9 Weymouth and Portland



OBJECTIVE 2 AREA

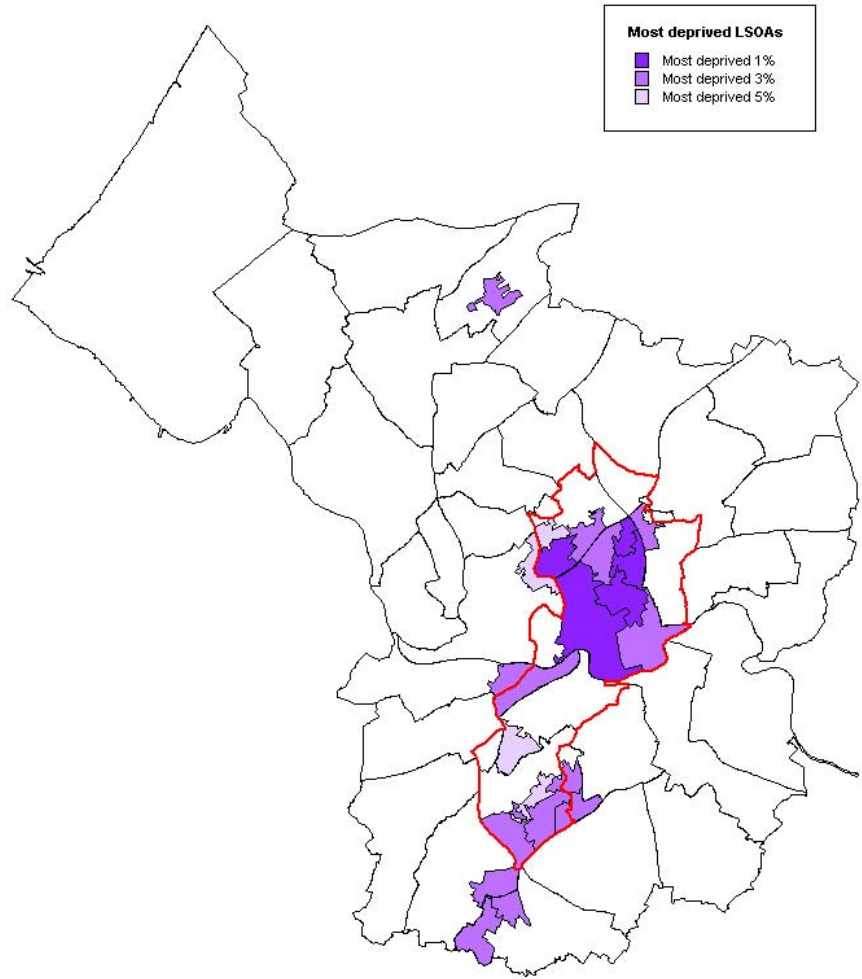


This map is licensed under the Creative Commons license with the permission of Bristol City Council and the Local Authority of the Strategic Planning Unit. It may not be reproduced, stored in a retrieval system, or transmitted in any form or by any means, electronic, mechanical, photocopying, recording, or by any information storage and retrieval system, without the prior written permission of Bristol City Council.

0447 5001

Index of Multiple Deprivation 2004 and Objective2 Area

Source: ODPM, Indices of Deprivation 2004
Analysed by Strategic and Citywide Policy, PTSD



Bristol Objective 2 Action Plan

- Devolved delivery mechanism for parts of the regional Objective 2 Programme (ESF & ERDF)
- Addresses regional and local priorities

Why An 'Action Plan'?

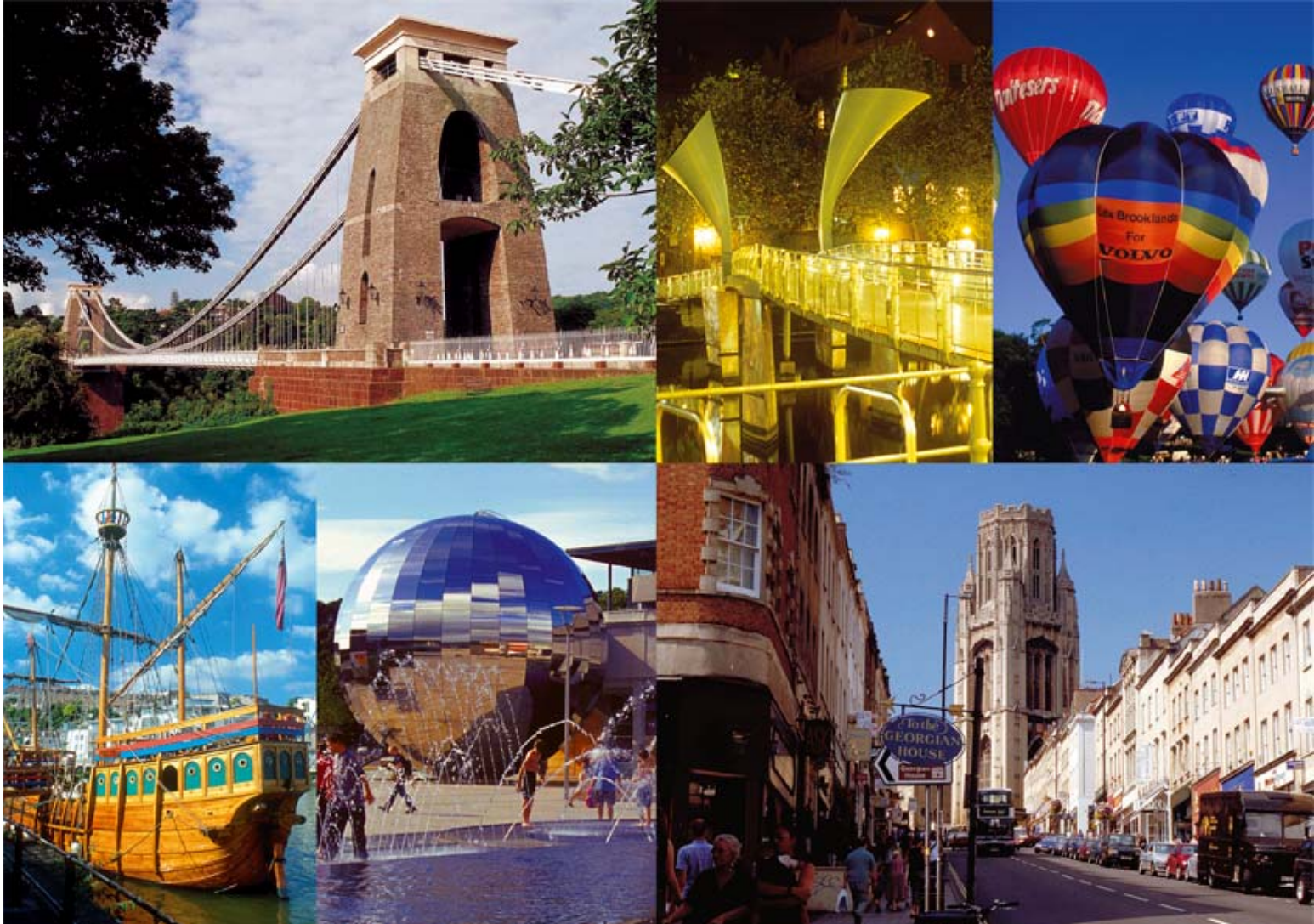
- Local ownership and control
- Strategic integrated and coherent framework for joined up delivery – 'synergy'
- Simple, effective, and innovative delivery
- Better decision making

Action Plan Benefits

- Project development support
- Two-stage application process
- Common application / business plan for applicants
- Bristol City Council bankrolling & monitoring

Great Results







www.bristolregeneration.org