

National, regional and sub-regional context for the delivery of Structural Funds and other regeneration activities

**SANTA CRUZ DE  
TENERIFE**

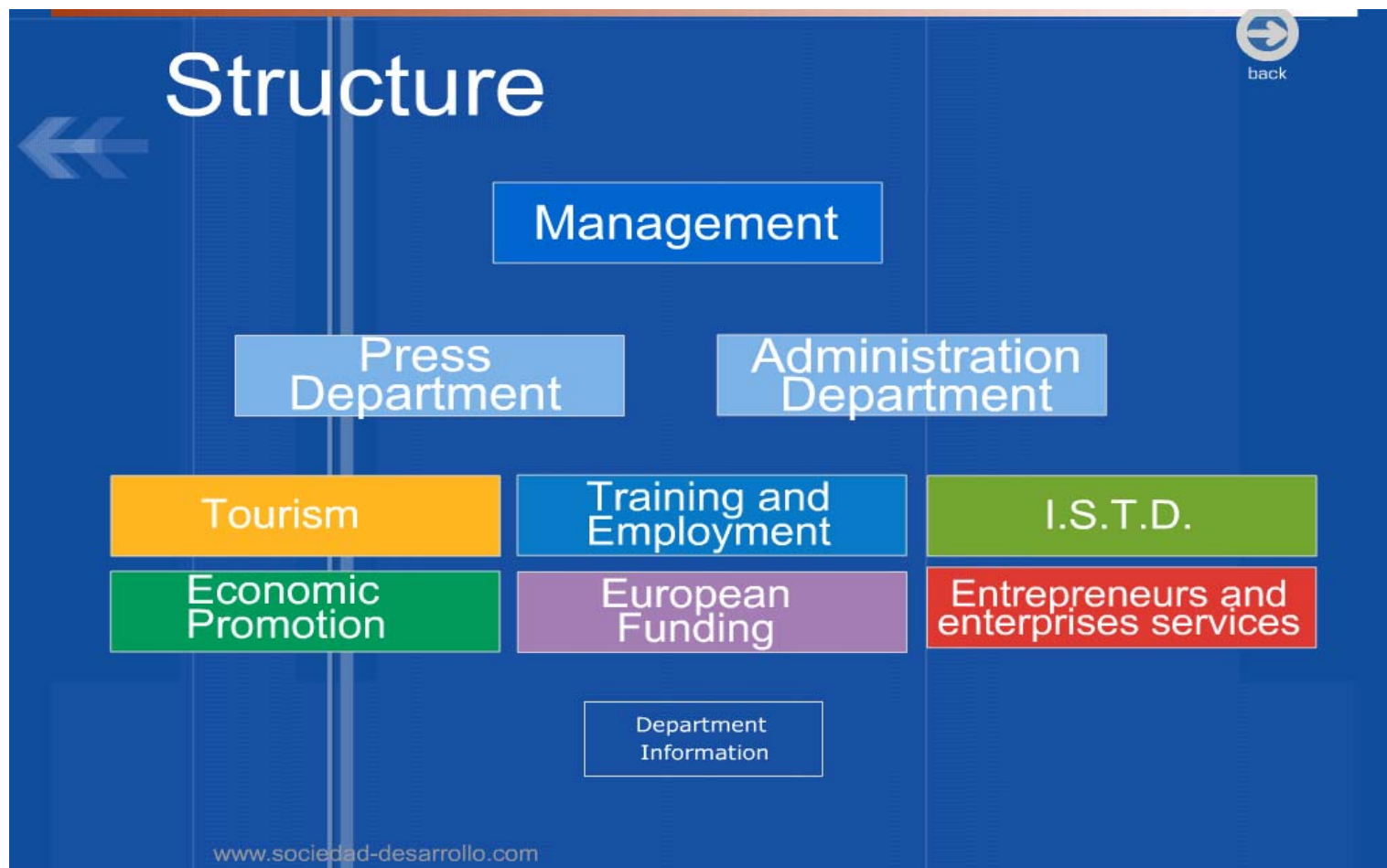
**Czech Republic . 20th and  
21st of September**

# SANTA CRUZ DE TENERIFE

---

- The Development Society was founded in 2000 as a public enterprise belonging to the Town Council of Santa Cruz de Tenerife, to promote the socio-economic development
- The company is divided in the following departments:

# Santa Cruz de Tenerife



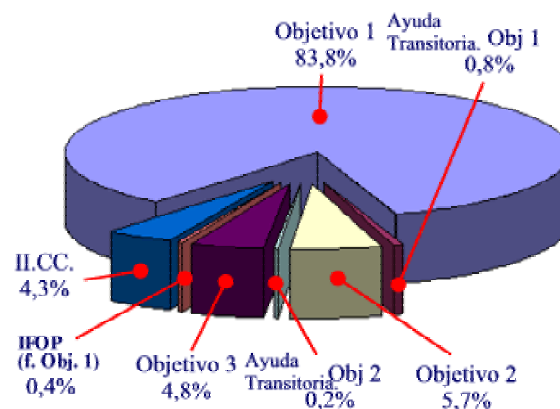
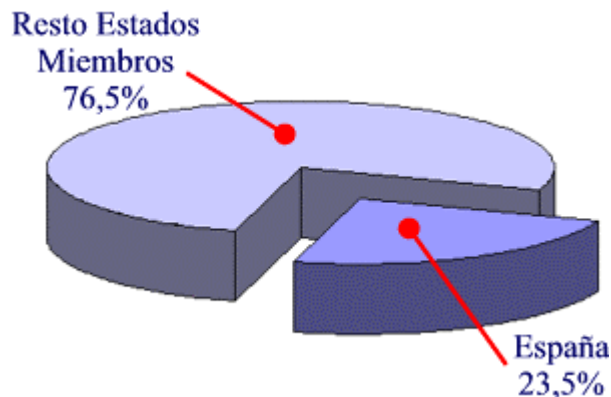
# SANTA CRUZ DE TENERIFE

---

- REGION OBJECTIVE 1
  - STRUCTURAL FUNDS
    - ERDF
    - ESF
    - EAGGF-G
    - FIFG
  - COHESION FUNDS
  - EIB
  - OTHER

# SANTA CRUZ DE TENERIFE

## DISTRIBUTION OF FUNDING RESOURCES



## EUROPEAN SUBSIDIES IN THE EUROPEAN MEMBERS

# SANTA CRUZ DE TENERIFE

---

- **LEVELS OF EUROPEAN FUNDING MANAGEMENT**

- European: European Commission
- National: Treasury Ministry/ Department
- Regional : Canary Islands Government

# Santa Cruz de Tenerife

---

- **PROCESS OF IMPLEMENTATION OF THE STRUCTURAL FUNDS IN SPAIN:**
  - Programme planning
    - Plan
    - Community Support Framework
    - Operational Programme
    - Single Programming Documents
    - Programme Complement
  - Implementation of the actions
    - Monitoring
    - Payments
    - Evaluation

# Santa Cruz de Tenerife

---

## PROGRAMME PLANNING

- Plan
- Community Support Framework
- Operational Programme
- Single Programming Documents
- Programme Complement

# Santa Cruz de Tenerife

---

## IMPLEMENTATION OF THE ACTIONS

- Monitoring
- Payments
- Evaluation

# SANTA CRUZ DE TENERIFE

---

- **EXAMPLES ( different levels)**
  - EUROPEAN LEVEL → MODELE ( INTERREG III C EAST)
  - NATIONAL LEVEL → REGENETARION OF GARCIA SANABRIA PARK ( P.O.L.)
  - REGIONAL LEVEL → PROMETEO ( F.S.E.)

# SANTA CRUZ DE TENERIFE

---

- EXPERIENCES

- INTERREG III: chapters B and C
- LEADER +
- URBAN
- EQUAL
- URB-AL
- LEONARDO
- LOCAL OPERATIVE PROGRAM
- COHESSION FUND